

# COMMON MODE CHOKES STC01F SERIES

## FEATURES:

- Inductance range from 4.5uH to 205uH
- Current range up to 7.0 Amps
- Noise attenuation up to 44 dB
- Frequency range up to 100 MHz
- Meets UL94V-0 flammability standard
- Ferrite core material

## OPTIONS:

- Supplied in tape and reel packaging

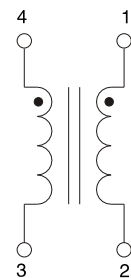
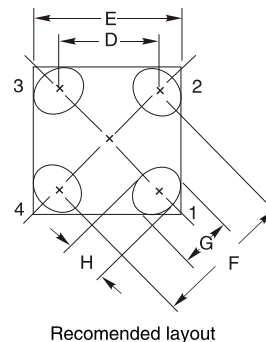
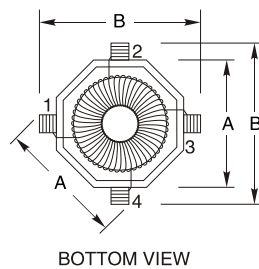
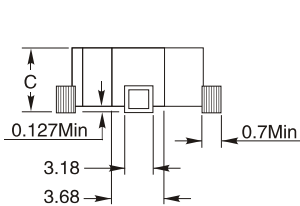
## COMMON APPLICATIONS:

- EMI filters
- DC-DC brick power supplies
- Discrete output supplies
- Discrete and point-of-use power supplies

## ELECTRICAL CHARACTERISTICS:

Part Number	L(0A) (uH) Min 100KHz,0.1V	I <sub>rms</sub> (A)Max	DCR (Ω)Typ (1-2)	DCR (Ω)Typ (4-3)	L <sub>k</sub> (uH) Typ 100KHz,0.1V	Interwinding Capacitance (pF)
STC01F-4R5Y	4.5	7.00	0.0027	0.0027	0.05	2.0
STC01F-8R0Y	8	5.70	0.0040	0.0040	0.09	2.1
STC01F-120Y	12.6	4.10	0.0077	0.0077	0.14	2.2
STC01F-180Y	18	3.80	0.0089	0.0089	0.20	2.3
STC01F-250Y	25	3.60	0.0100	0.0100	0.28	2.4
STC01F-320Y	32.8	3.10	0.0138	0.0138	0.36	2.5
STC01F-410Y	41.5	2.60	0.019	0.019	0.45	2.6
STC01F-510Y	51.2	2.20	0.026	0.026	0.056	2.7
STC01F-620Y	62	1.90	0.035	0.035	0.68	2.7
STC01F-730Y	73.7	1.65	0.048	0.048	0.81	2.8
STC01F-101Y	100	1.35	0.070	0.070	1.10	2.9
STC01F-131Y	131	1.15	0.100	0.100	1.45	3.0
STC01F-161Y	166	1.00	0.138	0.138	1.83	3.1
STC01F-201Y	205	0.85	0.186	0.186	2.25	3.2

## PHYSICAL CHARACTERISTICS



### NOTES:

- Inductance measure at 100KHz 0.1VRms.
- Insulation Resistance: 100Vdc 1KMΩ min.
- Dielectric Strength: 500 Vrms between windings
- Turns Ratio: 1:1
- RDC:QuadTech 1880 Milliohmmer
- Soldering temperature:260°C for 4 ± 1 seconds
- Operating temperature:-40°C to +125°C
- Storage Temperature: -40°C to +125°C
- Different package available per special request
- Max of 35% saturation on DC bias applied

A	B	C	D	E	F	G	H
8.89	11.43	4.2Max	7.04	10.72	9.96	3.68	3.05