

RFPS-SRSC-4S-63

Power Splitter/Combiner

Features

- wideband, DC to 6000 MHz,
- good matching VSWR 1.3:1 typ.
- good amplitude unbalance, 0.4 dB typ.

Applications

- communication systems
- CATV
- cellular, GPS, PCS
- VHF/UHF/receivers/transmitters

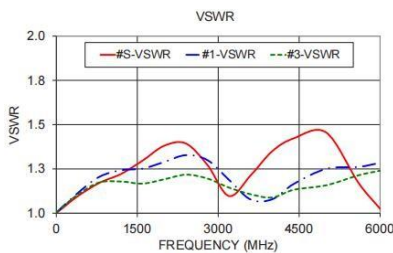
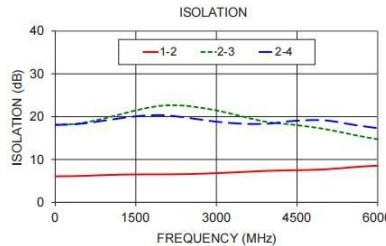
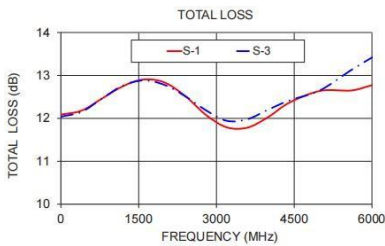


Electrical Specifications at 25°C

Parameter	Frequency(MHz)	Min.	Typ.	Max.	Unit
Frequency Range				6000	MHz
Insertion Loss, including 12 dB	DC-6000	11.5	12.0	13.2	dB
	3600-6000	11.5	12.5	14.0	
Isolation	DC-6000	-	7	-	dB
Phase Unbalance	DC-6000	-	3	8	Degree
	3600-6000	-	8	14	
Amplitude Unbalance	DC-6000	-	0.4	0.8	dB
	3600-6000	-	0.7	1.2	
VSWR (Port S)	DC-6000	-	1.35	1.65	:1
VSWR (Port 1-4)	DC-6000	-	1.30	1.60	:1

Typical Performance Data (TEST CONDITIONS: INPUT POWER = 0dBm @ Temperature = +25°C)

Freq. (MHz)	Total Loss (dB)			Amp. Unbal. (dB)	Isolation(dB)			Phase Unbal.(deg.)	VSWRS			
	S-1	S-2	S-3		1-2	2-3	2-4		S	1	2	3
1	12.09	12.08	12.04	0.05	6.06	18.08	18.09	0.30	1.00	1.00	1.00	1.01
400	12.18	12.18	12.15	0.03	6.13	18.35	18.26	0.44	1.10	1.11	1.11	1.11
800	12.47	12.50	12.47	0.04	6.31	19.27	18.87	1.25	1.17	1.21	1.19	1.17
1200	12.75	12.83	12.77	0.08	6.46	20.50	19.60	2.18	1.22	1.24	1.21	1.18
1600	12.90	13.00	12.88	0.15	6.52	21.76	20.20	3.10	1.30	1.25	1.19	1.17
2000	12.83	12.96	12.78	0.31	6.53	22.58	20.34	3.41	1.38	1.29	1.23	1.19
2400	12.52	12.72	12.51	0.43	6.58	22.56	19.85	3.28	1.39	1.33	1.28	1.22
2800	12.08	12.34	12.19	0.43	6.71	21.90	19.13	2.97	1.27	1.30	1.27	1.20
3200	11.79	12.03	11.94	0.34	6.91	20.91	18.59	3.06	1.10	1.19	1.23	1.14
3600	11.78	12.07	11.98	0.28	7.15	19.66	18.30	3.81	1.21	1.08	1.13	1.11
4000	12.03	12.39	12.20	0.36	7.37	18.63	18.39	4.85	1.35	1.08	1.12	1.09
4400	12.36	12.71	12.41	0.35	7.48	18.16	18.97	5.91	1.42	1.17	1.11	1.13
5000	12.64	12.95	12.65	0.39	7.68	17.15	19.15	7.06	1.46	1.25	1.12	1.16
5600	12.65	13.05	13.13	0.49	8.26	15.62	18.00	8.66	1.17	1.26	1.21	1.21
6000	12.77	13.11	13.42	0.68	8.55	14.72	17.32	8.39	1.02	1.28	1.29	1.24



Maximum Ratings

Operating Temperature	-40°C to 85°C
Storage Temperature	-55°C to 100°C
Power Input (as a splitter)	0.2W max.
Internal Dissipation	0.15W max.
Permanent damage may occur if any of these limits are exceeded.	

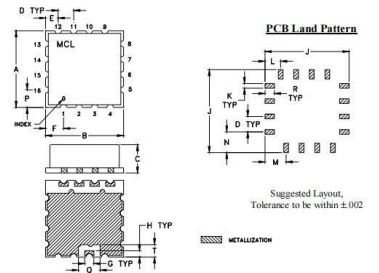
Electrical Schematic



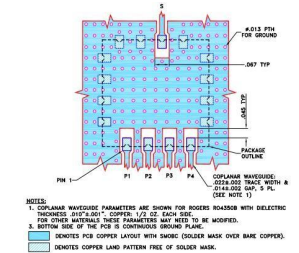
Pin Connections

SUM PORT	10
PORT 1	1
PORT 2	2
PORT 3	3
PORT 4	4
GROUND	ALL OTHER

Outline Drawing



PCB Land Pattern



Outline Dimensions: Unit (mm)

A	12.70	B	12.70
C	4.70	D	2.54
E	2.03	F	2.92
G	0.76	H	1.02
J	13.72	K	0.76
L	2.54	M	3.43
N	3.43	P	2.92
Q	3.56	R	1.52
T	2.03	wt	1.0g